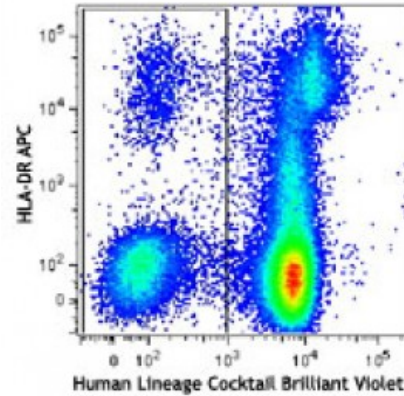


Brilliant Violet 510™ anti-human Lineage Cocktail (CD3, CD14, CD16, CD19, CD20, CD56)

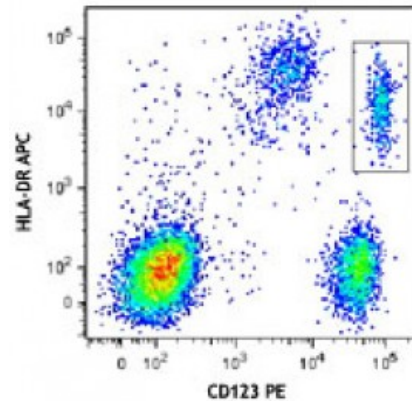
Catalog # / Size: 2344035 / 25 tests
Clone: OKT3, M5E2, 3G8, HIB19, 2H7, HCD56
Isotype: Mouse IgG1, κ, Mouse IgG2a, κ
Reactivity: Human
Preparation: The antibody was purified by affinity chromatography, and conjugated with Brilliant Violet 510™ under optimal conditions. The solution is free of unconjugated Brilliant Violet 510™.
Formulation: Phosphate-buffered solution, pH 7.2, containing 0.09% sodium azide and BSA (origin USA).
Concentration: Lot-specific



Human peripheral blood leukocytes stained with Brilliant Violet 510™ Human Lineage Cocktail and HLA-DR APC.

Applications:

Applications: Flow Cytometry
Recommended Usage: Each lot of this antibody is quality control tested by immunofluorescent staining with flow cytometric analysis. For flow cytometric staining, the suggested use of this reagent is 20 microL per million cells or 20 microL per 100 microL of whole blood. It is recommended that the reagent be titrated for optimal performance for each application.



Human peripheral blood leukocytes co-stained with CD123 PE and HLA-DR APC (gated on the Lineage negative/dim population).

This product is subject to proprietary rights of Sirigen Inc. and is made and sold under license from Sirigen Inc. The purchase of this product conveys to the buyer a non-transferable right to use the purchased product for research purposes only. This product may not be resold or incorporated in any manner into another product for resale. Any use for therapeutics or diagnostics is strictly prohibited. This product is covered by U.S. Patent(s), pending patent applications and foreign equivalents.

Description: This anti-Human Lineage Cocktail is optimized for the detection of human peripheral blood T cells, B cells, NK cells, monocytes, and neutrophils. In combination with other markers, it can be used for studies of dendritic cells and/or basophils. This cocktail is composed of CD3, CD14, CD16, CD19, CD20, and CD56. CD3 is the antigen mainly found on T cells; CD14 is expressed on

monocytes/macrophages and at low levels on neutrophils and eosinophils; CD16 is expressed on NK cells, activated monocytes/macrophages, and neutrophils; CD19 and CD20 are on B cells; CD56 is located on NK cells.