

**PE anti-human CD229 (Ly-9)**

**Catalog # / Size:** 2230540 / 100 tests  
2230535 / 25 tests

**Clone:** HLy-9.1.25

**Isotype:** Mouse IgG1,  $\kappa$

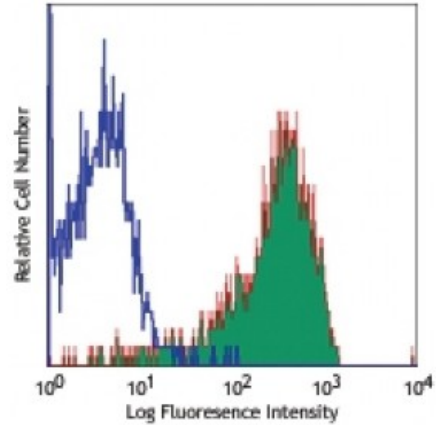
**Immunogen:** 300.19 cell line transfected with the CD229 full-length DNA

**Reactivity:** Human

**Preparation:** The antibody was purified by affinity chromatography, and conjugated with PE under optimal conditions. The solution is free of unconjugated PE and unconjugated antibody.

**Formulation:** Phosphate-buffered solution, pH 7.2, containing 0.09% sodium azide and 0.2% (w/v) BSA (origin USA).

**Concentration:** Lot-specific



Human peripheral blood lymphocytes stained with HLy-9.1.25 PE

**Applications:**

**Applications:** Flow Cytometry

**Recommended Usage:** Each lot of this antibody is quality control tested by immunofluorescent staining with flow cytometric analysis. **Test size products are transitioning from 20 microL to 5 microL per test.** Please check your vial or your CoA to find the suggested use of this reagent per million cells in 100 microL staining volume or per 100 microL of whole blood. It is recommended that the reagent be titrated for optimal performance for each application.

**Application Notes:** Additional reported (for the relevant formats) applications include: immunoprecipitation<sup>1,2</sup>, and immunocytochemistry<sup>3</sup>. The LEAF™ purified antibody (Endotoxin <0.1 EU/microg, Azide-Free, 0.2  $\mu$ m filtered) is recommended for functional assays (Cat. No. 326104).

**Application References:**

1. de la Fuente MA, *et al.* 2001. *Blood* 97:3513.
2. Martin M, *et al.* 2005. *J. Immunol.* 174:5977.
3. Romero X, *et al.* 2005. *J. Immunol.* 174:7033.

**Description:** CD229 is a 100-120 kD glycoprotein. It is a member of the SLAM family, a CD2 subset of the Ig superfamily, known as Ly9 or SLAMF3. CD229 is expressed on T cells, B cells, NK cells, and thymocytes. It functions as a homophilic adhesion molecule through binding to CD229 itself. The cytoplasmic tail of CD229 binds to SAP and Grb2 proteins. CD229 is involved in enhancing T cell activation and Th2 polarization. HLy9.1.25 antibody recognizes epitope A in the first Ig domain of Ly9 molecule.

**Antigen References:**

1. Sandrin MS, *et al.* 1996. *Immunogenetics* 43:13.
2. de la Fuente MA, *et al.* 2001. *Blood* 97:3513.
3. Romero X, *et al.* 2005. *J. Immunol.* 174:7033.
4. Martin M, *et al.* 2005. *J. Immunol.* <