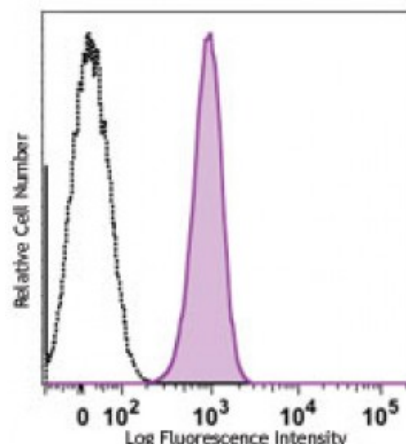


**FITC anti-human CD41b**

**Catalog # / Size:** 2374020 / 100 tests  
**Clone:** HIP2  
**Isotype:** Mouse IgG3,  $\kappa$   
**Reactivity:** Human  
**Preparation:** The antibody was purified by affinity chromatography, and conjugated with FITC under optimal conditions. The solution is free of unconjugated FITC.  
**Formulation:** Phosphate-buffered solution, pH 7.2, containing 0.09% sodium azide and 0.2% (w/v) BSA (origin USA).  
**Concentration:** Lot-specific



Human peripheral blood platelets stained with CD41b (clone HIP2) FITC (filled histogram) or anti-mouse IgG3 FITC isotype control.

**Applications:**

**Applications:** Flow Cytometry  
**Recommended Usage:** Each lot of this antibody is quality control tested by immunofluorescent staining with flow cytometric analysis. For flow cytometric staining, the suggested use of this reagent is 5  $\mu$ L per million cells or 5  $\mu$ L per 100  $\mu$ L of whole blood. It is recommended that the reagent be titrated for optimal performance for each application.  
**Application References:** 1. Leong L, *et al.* 1995. *J. Cell. Sci.* 108:3817.

**Description:** CD41b is a  $\beta$  chain of glycoprotein IIb (known as CD41) which is associated with glycoprotein IIIa (or integrin  $\beta$ 3, CD61) and forms CD41/CD61 complex. CD41/CD61 mediates platelet adhesion and aggregation through the interaction with fibrinogen, fibronectin, von Willebrand factor, and thrombin. CD41 is expressed by platelets and megakaryocytes.  
**Antigen References:** 1. Nakahata T, *et al.* 1994 *Leuk. Lymphoma* 13:401.