

Purified anti-human CD213 α 2 (IL13R α 2)

Catalog # / Size: 2372010 / 100 μ g
2372005 / 25 μ g

Clone: SHM38

Isotype: Mouse IgG1, κ

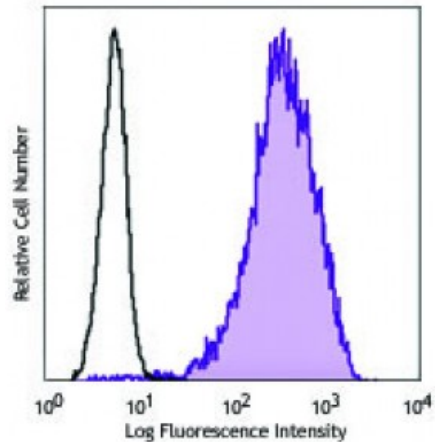
Immunogen: Melanoma cell line A375

Reactivity: Human

Preparation: The antibody was purified by affinity chromatography.

Formulation: Phosphate-buffered solution, pH 7.2, containing 0.09% sodium azide.

Concentration: 0.5



Human melanoma cell line, A375, was stained with purified CD213 α 2 (clone SHM38, filled histogram) or purified mouse IgG1, κ isotype control (open histogram), followed by anti-mouse IgG PE.

Applications:

- Applications:** Flow Cytometry
- Recommended Usage:** Each lot of this antibody is quality control tested by immunofluorescent staining with flow cytometric analysis. For flow cytometric staining, the suggested use of this reagent is ≤ 2.0 microg per million cells in 100 microL volume. It is recommended that the reagent be titrated for optimal performance for each application.
- Application References:**
1. Takenouchi M, *et al.* 2011. Clin. Cancer Res. 17:2819. (FC)

Description: CD213 α 2, also known as IL-13R α 2, is a type I transmembrane protein and member of the hematopoietin family. IL13R α 2 is the high affinity receptor for IL-13, but it possibly acts as a decoy receptor to antagonize IL-13R α 1/IL-4R α -mediated IL-13 biological functions. IL13R α 2 is expressed by fibroblasts, smooth muscle cells, keratinocytes and activated B cells. However, its presence on the cell surface is highly regulated. CD213 α 2 is also expressed in various types of cancer which makes it an attractive therapeutic target.

Antigen References:

1. Mitchell J, *et al.* 2010. *Curr. Opin. Investig Drugs.* 11:527.
2. Strober W, *et al.* 2009. *Curr. Mol. Med.* 9:740.
3. Tabata Y, *et al.* 2007. *Curr. Allergy Asthma Rep.* 7:338.