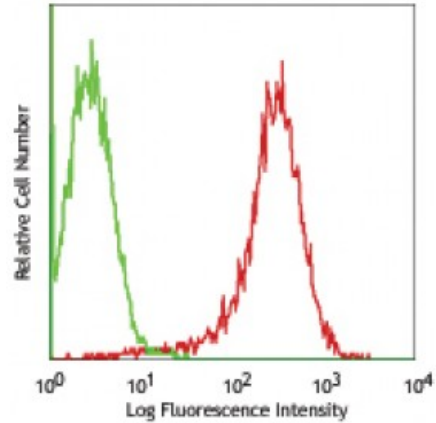


**PE anti-human CD231 (TALLA)**

**Catalog # / Size:** 2247030 / 100 tests  
**Clone:** SN1a (M3-3D9)  
**Isotype:** Mouse IgG1, κ  
**Immunogen:** isolated human CD231 antigen  
**Reactivity:** Human  
**Preparation:** The antibody was purified by affinity chromatography, and conjugated with PE under optimal conditions. The solution is free of unconjugated PE and unconjugated antibody.  
**Formulation:** Phosphate-buffered solution, pH 7.2, containing 0.09% sodium azide and 0.2% (w/v) BSA (origin USA).  
**Workshop Number:** VII 70397  
**Concentration:** Lot-specific



Human T lymphoblastic leukemia cell line, Jurkat, stained with SN1a (M3-3D9) PE

**Applications:**

**Applications:** Flow Cytometry  
**Recommended Usage:** Each lot of this antibody is quality control tested by immunofluorescent staining with flow cytometric analysis. **Test size products are transitioning from 20 microL to 5 microL per test.** Please check your vial or your CoA to find the suggested use of this reagent per million cells in 100 microL staining volume or per 100 microL of whole blood. It is recommended that the reagent be titrated for optimal performance for each application.  
**Application Notes:** Additional reported applications (for the relevant formats) include: immunoprecipitation<sup>1</sup>, immunohistochemical staining of acetone-fixed frozen tissue sections<sup>1</sup>, immunofluorescence<sup>2</sup>  
**Application References:** 1. Matsuzaki H and Seon BK. 1987. Cancer Res. 47:4283.  
 2. Seon BK, *et al.* 1983. Proc. Natl. Acad. Sci. USA. 80:845.

**Description:** CD231 is 150 kD (28-45 kD reduced) cell surface glycoprotein belonging to the Transmembrane 4 Superfamily (TM4SF also known as tetraspanins). It was originally described as T-cell Acute Lymphoblastic Leukemia Antigen (TALLA or TALLA-1). CD231 is expressed on T-cell acute lymphoblastic leukemia, neuroblastoma cells, skeletal muscle, spleen and normal brain neuron. CD231 plays a role in integrin-mediated migration, however, its biological function is not fully clear yet.  
**Antigen References:** 1. Matsuzaki H and Seon BK. 1987. Cancer Res. 47:4283.  
 2. Seon BK, *et al.* 1983. Proc. Natl. Acad. Sci. USA. 80:845.  
 3. Hara H and Seon BK. 1986. Proc. Natl. Acad. Sci. USA 84:3390.