

## Technical Data Sheet

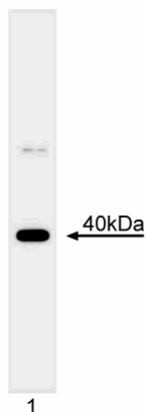
## Purified Mouse Anti-Human MCL-1

## Product Information

Material Number:	559027
Size:	0.1 mg
Concentration:	0.5 mg/ml
Clone:	22/Mcl-1
Immunogen:	Purified recombinant human Mcl-1 lacking the C-terminal hydrophobic domain
Isotype:	Mouse IgG1, $\kappa$
Reactivity:	QC Testing: Human
Target MW:	40 kDa
Storage Buffer:	Aqueous buffered solution containing $\leq 0.09\%$ sodium azide.

## Description

The Bcl-2 family of proteins plays a pivotal role in determining the life and death of a cell. Members of the Bcl-2 family all possess at least one of four conserved Bcl-2 homology domains (BH1-BH4) which mediate protein-protein interactions. They can be divided into molecules that have either an anti-apoptotic or pro-apoptotic function. The ratio between these two groups of molecules can help determine whether a cell lives or dies. The majority of anti-apoptotic family members contain common BH1-BH4 domains and are most similar to Bcl-2. Mcl-1 is a member of the anti-apoptotic Bcl-2 group of proteins, including Bcl-x, Bcl-w, A1/Bfl-1, Boo/Diva, and Nr-13. Mcl-1 was cloned from the ML-1 human myeloblastic leukemia cell line. Mcl-1 localizes to the mitochondria, like Bcl-2, but also associates with membranes via its C-terminal hydrophobic domain. Further studies have shown that Mcl-1 is upregulated in response to the GM-CSF and IL-3 cytokine signaling pathways and that this regulation of Mcl-1 is controlled at the level of transcription. Mcl-1 is detected at approximately 40 kDa in SDS/PAGE.



**Western blot analysis of Mcl-1.** Lysates from K-562 cells were probed with anti-human Mcl-1 antibody (clone 22, Cat. No. 559027) at a concentration of 2  $\mu\text{g/ml}$ . Mcl-1 is identified at approximately 40 kDa.

## Preparation and Storage

The monoclonal antibody was purified from tissue culture supernatant or ascites by affinity chromatography.

Store undiluted at 4° C.

## Application Notes

## Application

Western blot	Routinely Tested
Immunoprecipitation	Tested During Development

## Recommended Assay Procedure:

The antibody is tested by Western blot on K-562 cell lysate (ATCC CCL-243). Other applications include immunoprecipitation (1-2  $\mu\text{g/ml}$ ).

## BD Biosciences

[bdbiosciences.com](http://bdbiosciences.com)

United States	Canada	Europe	Japan	Asia Pacific	Latin America/Caribbean
877.232.8995	888.259.0187	32.53.720.550	0120.8555.90	65.6861.0633	55.11.5185.9995

For country-specific contact information, visit [bdbiosciences.com/how\\_to\\_order/](http://bdbiosciences.com/how_to_order/)

Conditions: The information disclosed herein is not to be construed as a recommendation to use the above product in violation of any patents. BD Biosciences will not be held responsible for patent infringement or other violations that may occur with the use of our products. Purchase does not include or carry any right to resell or transfer this product either as a stand-alone product or as a component of another product. Any use of this product other than the permitted use without the express written authorization of Becton Dickinson and Company is strictly prohibited.

For Research Use Only. Not for use in diagnostic or therapeutic procedures. Not for resale.

BD, BD Logo and all other trademarks are the property of Becton, Dickinson and Company. ©2008 BD



## Suggested Companion Products

Catalog Number	Name	Size	Clone
611550	K-562 Cell Lysate	500 µg	(none)
554002	HRP Goat Anti-Mouse Ig	1.0 ml	(none)

## Product Notices

1. Since applications vary, each investigator should titrate the reagent to obtain optimal results.
2. Please refer to [www.bdbiosciences.com/pharming/en/protocols](http://www.bdbiosciences.com/pharming/en/protocols) for technical protocols.
3. Caution: Sodium azide yields highly toxic hydrazoic acid under acidic conditions. Dilute azide compounds in running water before discarding to avoid accumulation of potentially explosive deposits in plumbing.

## References

- Adams JM, Cory S. The Bcl-2 protein family: arbiters of cell survival. *Science*. 1998; 281(5381):1322-1326.(Biology)
- Gross A, McDonnell JM, Korsmeyer SJ. BCL-2 family members and the mitochondria in apoptosis. *Genes Dev*. 1999; 13(15):1899-1911.(Biology)
- Kozopas KM, Yang T, Buchan HL, Zhou P, Craig RW. MCL1, a gene expressed in programmed myeloid cell differentiation, has sequence similarity to BCL2. *Proc Natl Acad Sci U S A*. 1993; 90(8):3516-3520.(Biology)
- Oltvai ZN, Milliman CL, Korsmeyer SJ. Bcl-2 heterodimerizes in vivo with a conserved homolog, Bax, that accelerates programmed cell death. *Cell*. 1993; 74(4):609-619.(Biology)
- Wang JM, Chao JR, Chen W, Kuo ML, Yen JJ, Yang-Yen HF. The antiapoptotic gene mcl-1 is up-regulated by the phosphatidylinositol 3-kinase/Akt signaling pathway through a transcription factor complex containing CREB. *Mol Cell Biol*. 1999; 19(9):6195-6206.(Biology)
- Yang T, Kozopas KM, Craig RW. The intracellular distribution and pattern of expression of Mcl-1 overlap with, but are not identical to, those of Bcl-2. *J Cell Biol*. 1995; 128(6):1173-1184.(Biology)